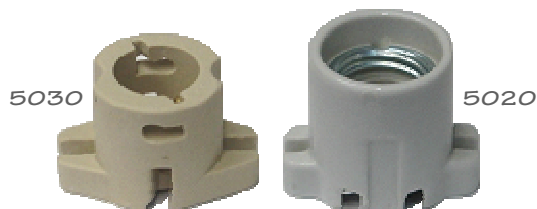
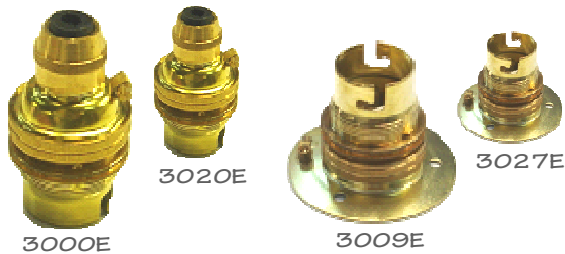
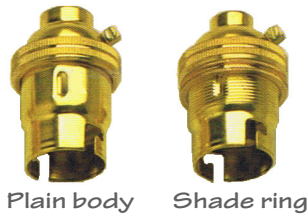
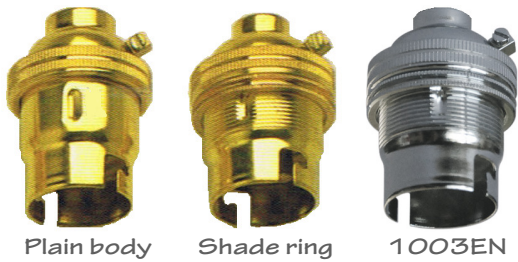


For Earth terminal add suffix "E" after part number. Threads are Imperial 26 TPI and metric M10x1mm pitch.  
All holders fitted with porcelain interiors and hold 250V approvals. Rated 2A at 250V.



B22D BC BAYONET CAP LAMPHOLDERS	
PART NO.	PACKED IN BOXES OF 10
1003	10mm threaded entry with shade locking ring.
1003EN	10mm threaded entry with shade locking ring. (Nickel plate)
1004	10mm threaded entry. Plain body.
3001	3/8" threaded entry with shade locking ring.
3002	3/8" threaded entry. Plain body.
3003	1/2" threaded entry with shade locking ring.
3004	1/2" threaded entry. Plain body.

SBC SMALL BAYONET CAP LAMPHOLDERS	
PART NO.	PACKED IN BOXES OF 20
1021	10mm threaded entry with shade locking ring.
1022	10mm threaded entry. Plain body.
3021	3/8" threaded entry with shade locking ring.
3022	3/8" threaded entry. Plain body.
3023	1/2" threaded entry with shade locking ring.
3024	1/2" threaded entry. Plain body.

BATTEN FIX & CORD GRIP LAMPHOLDERS	
PART NO.	PACKED IN BOXES OF 20
3000E	BC B22D socket with nylon cord grip entry shade locking and earth terminal.
3020E	SBC B15D socket with nylon cord grip entry shade locking ring and earth terminal.
3009E	BC B22D 3holes batten mounting holder with shade locking ring and earth terminal.
3027E	SBC B15D 3 holes batten mounting holder with shade locking ring and earth terminal.

E27 EDISON SCREW BRASS LAMPHOLDERS	
PART NO.	DESCRIPTION
4002E	1/2" threaded entry Plain body E27 lampholder with earth terminal. Rated 250V 4A.
4010E	1/2" threaded entry E27 lampholder with shade locking ring and earth terminal. Rated 250V 4A.

The 'Safer-Switch' Enhances Safety Lampholder  
This product offers the consumer an extra level of safety previously unavailable in this type of lampholder. A simple yet reliable patented innovation ensures that the switch returns and remains in the off position when ever a bulb is removed. This represents a significant advance in luminaire safety and is fully certified to BS7895:1997 Enhanced Safety Lampholder standard.

B22D BC PUSH BAR LAMPHOLDERS	
PART NO.	DESCRIPTION
PB1413E	10mm threaded entry push bar switched lampholder with shade locking ring and earth terminal.
PB3413E	1/2" threaded entry push bar switched lampholder with shade locking ring and earth terminal.

B22D LAMPHOLDER	
PART NO.	DESCRIPTION
GPO5	B22D gold anodized aluminium 2 piece M10 x 1 entry.

BATTEN FIX LAMPHOLDERS	
PART NO.	DESCRIPTION
5020	E27 (E5) porcelain batten fix lampholder. Fixing centre 38.5mm Dia. 42mm x Height 47mm
5030	B22D (BC) porcelain batten fix lampholder. Fixing centre 39.5mm Dia. 38mm x Height 35mm