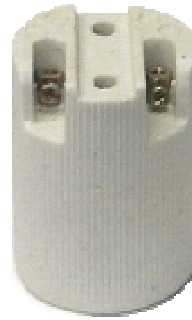
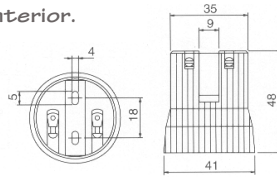




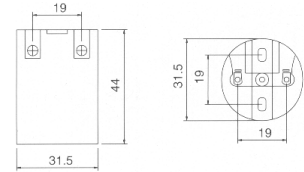
E27/CER

E27 (ES) porcelain lampholder
250V 4A rating.
Screw terminals. Nickel plated
steel interior.



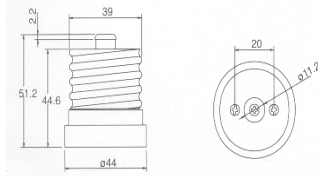
E14/CER

E14 (SES) porcelain lampholder
250V 2A rating.
Screw terminals. Nickel plated
steel interior.



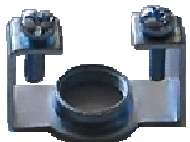
321 ADAPTOR

E40 > E27 (GES to ES) externally screwed
porcelain reduction bush.
Adapts GES to ES sockets saves expensive
re-wiring. Reduces mogul E39 thread to E27
also.



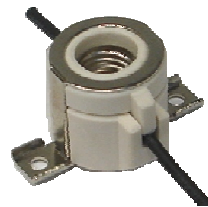
312 ADAPTOR

E27 > BI-PIN Universal G4, G5.3, G6.35



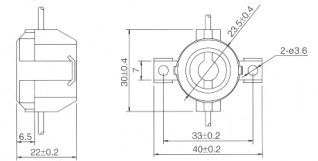
S27/T

Lampholder bracket M10 to suit E27/
CER
Ceramic lampholder.



E1124G

E11 porcelain lampholder with T180°C
silicon lead. Screw mounting bracket
attached.



BAKELITE LAMP HOLDERS

A wide range of lampholders in both Bayonet cap and Edison screw are available. All lampholders carry current Approval to Australian standards. Standard temperature rating of Bakelite is 110 °C. Some model are sold unassembled lots.



B153175
E14700



E143585V



E27760



E27761



E27761RS



E27761/56

Item no.	Descriptions
B153175	SBC Bakelite lampholder 27dia. X 56mm length with M10 x 1 rear threaded entry.
E14700	SES Bakelite lampholder 27dia. X 56mm length with M10 x 1 rear threaded entry.
E143585V	SES Bakelite candle lampholder with 38mm hickey attached. Overall length 85mm.
E27760	ES E27 Bakelite lampholder 40dia. X 55mm length T220°C rating. M10 x 1 rear threaded entry.
E27761	ES E27 Bakelite lampholder with <u>exterior fully threaded</u> skirt 40dia. X 55mm length. M10 x 1 rear threaded entry.
E27761/RS	ES E27 Bakelite lampholder with <u>exterior half way threaded</u> skirt M10 x 1 rear threaded entry.
E27761/56	Ring only to suit E27 externally threaded lampholders.

B22 LAMP HOLDERS



Base type
B22



Colour / Finish
Black, White

The plastic bayonet B22 4-piece lampholders available in 10mm or 13mm (1/2") female thread with or without on/off push bar switch. Standard colour : Black and White

Item no.	Descriptions
B224PCBK/10	10mm Black BC lampholder
B224PCWH/10	10mm White BC lampholder
B224PCBK/13	1/2" Black BC lampholder
B224PCWH/13	1/2" White BC lampholder
B22PB10/BK	10mm Black BC lampholder with push bar
B22PB10/WH	10mm White BC lampholder with push bar
B22PB13/BK	1/2" Black BC lampholder with push bar